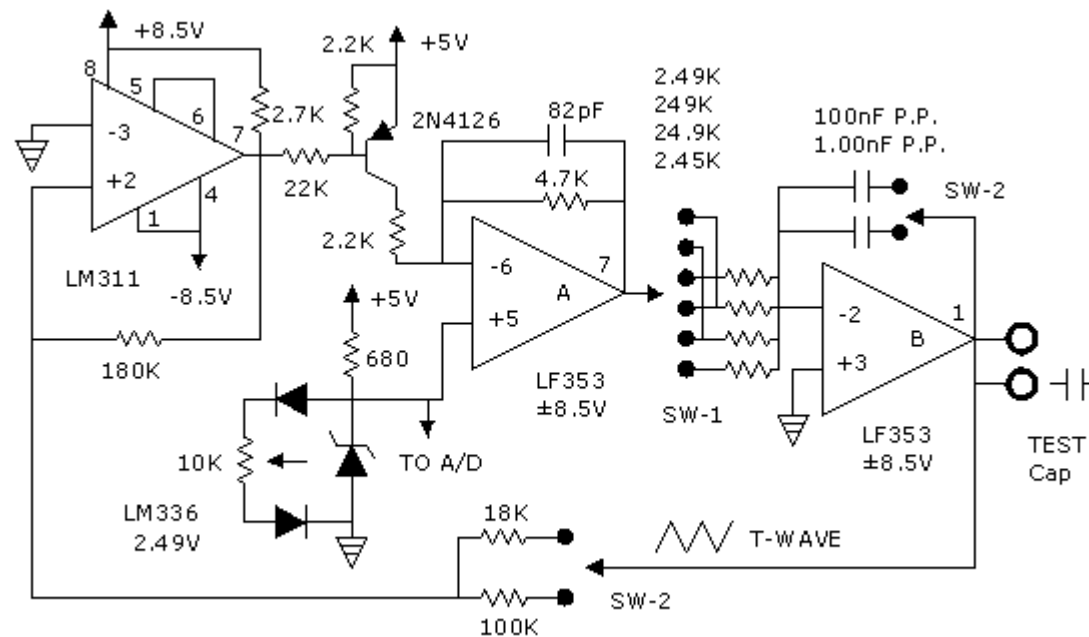




Circuitos impressos

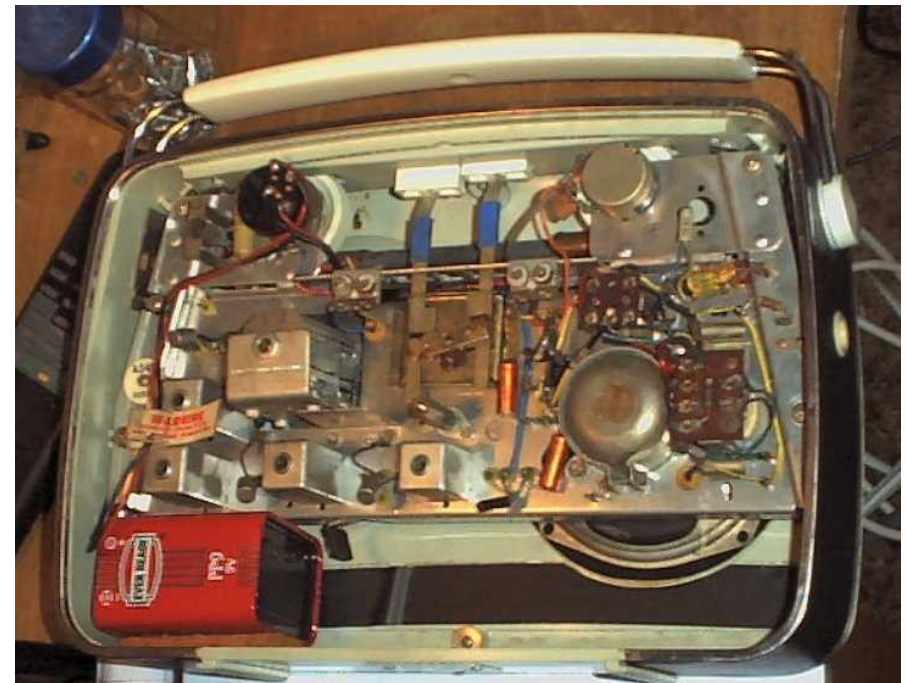
Pedro Fonseca
DETI

- Circuitos electrónicos = componentes + ligações

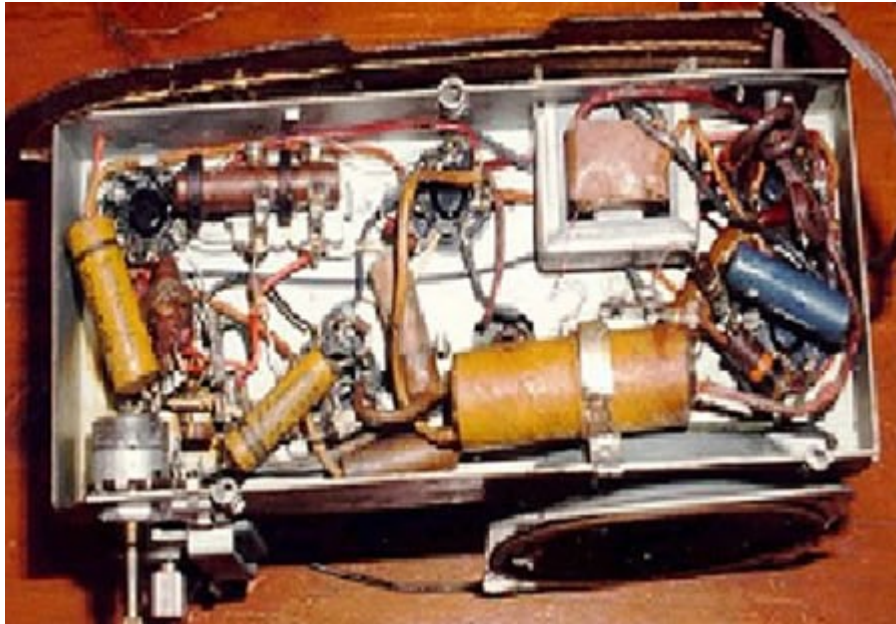


Primeiros circuitos

- Componentes montados num “chassi” metálico
- Ligações com fios



<http://www.gi4xsf.com/tr82/tr82c.htm>



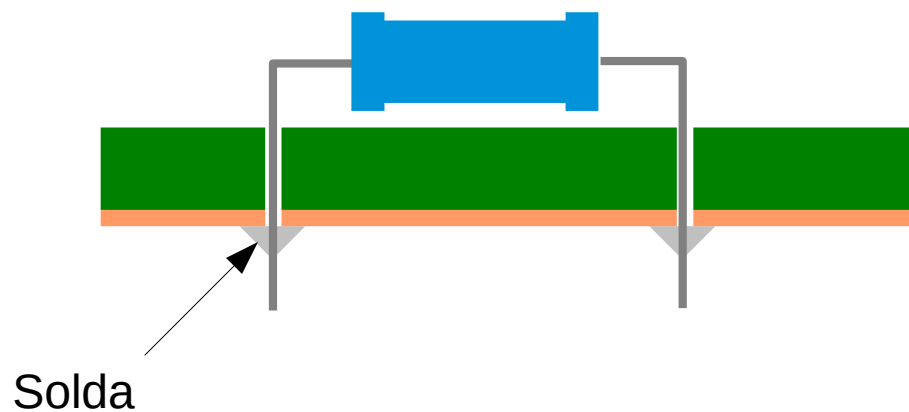
http://www.ami.ac.uk/courses/ami4809_pcd/unit_01/

PCB

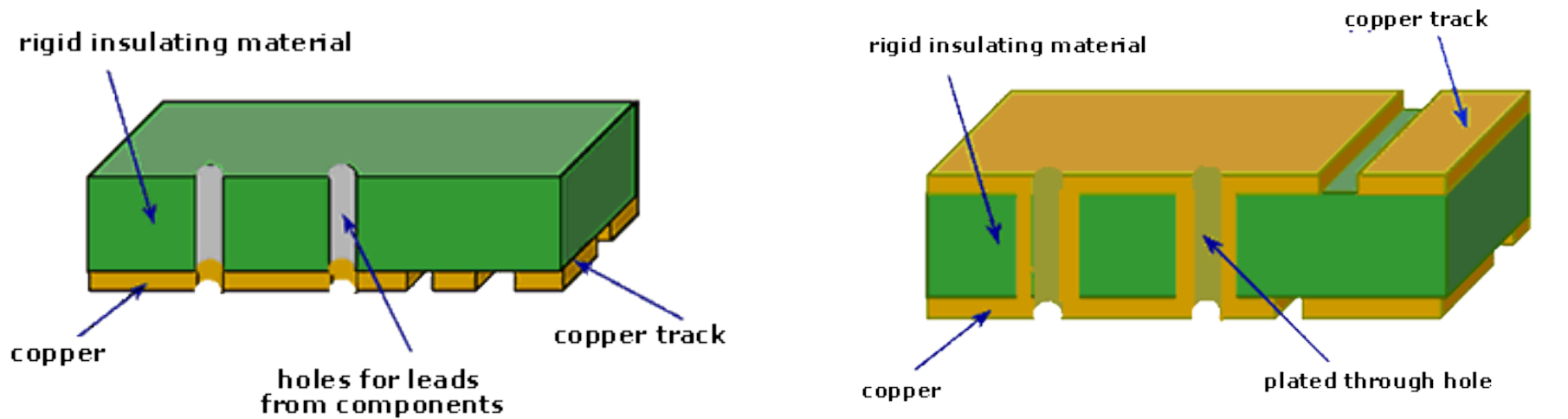
- Printed Circuit Board
- Placa de material isolante com uma ou mais camadas de cobre



Montagem em “single-layer”

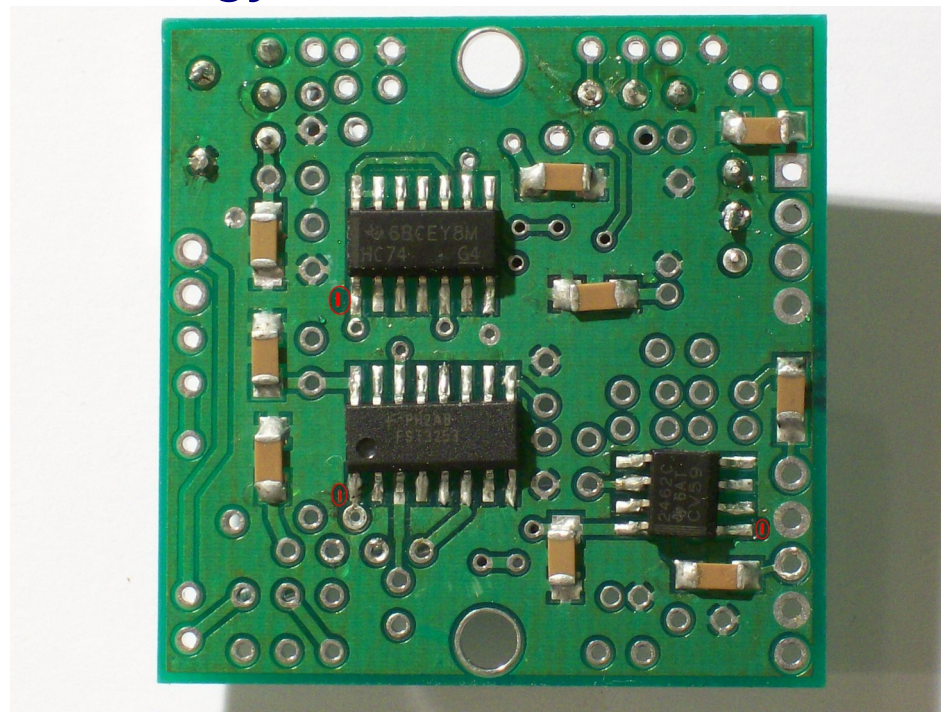


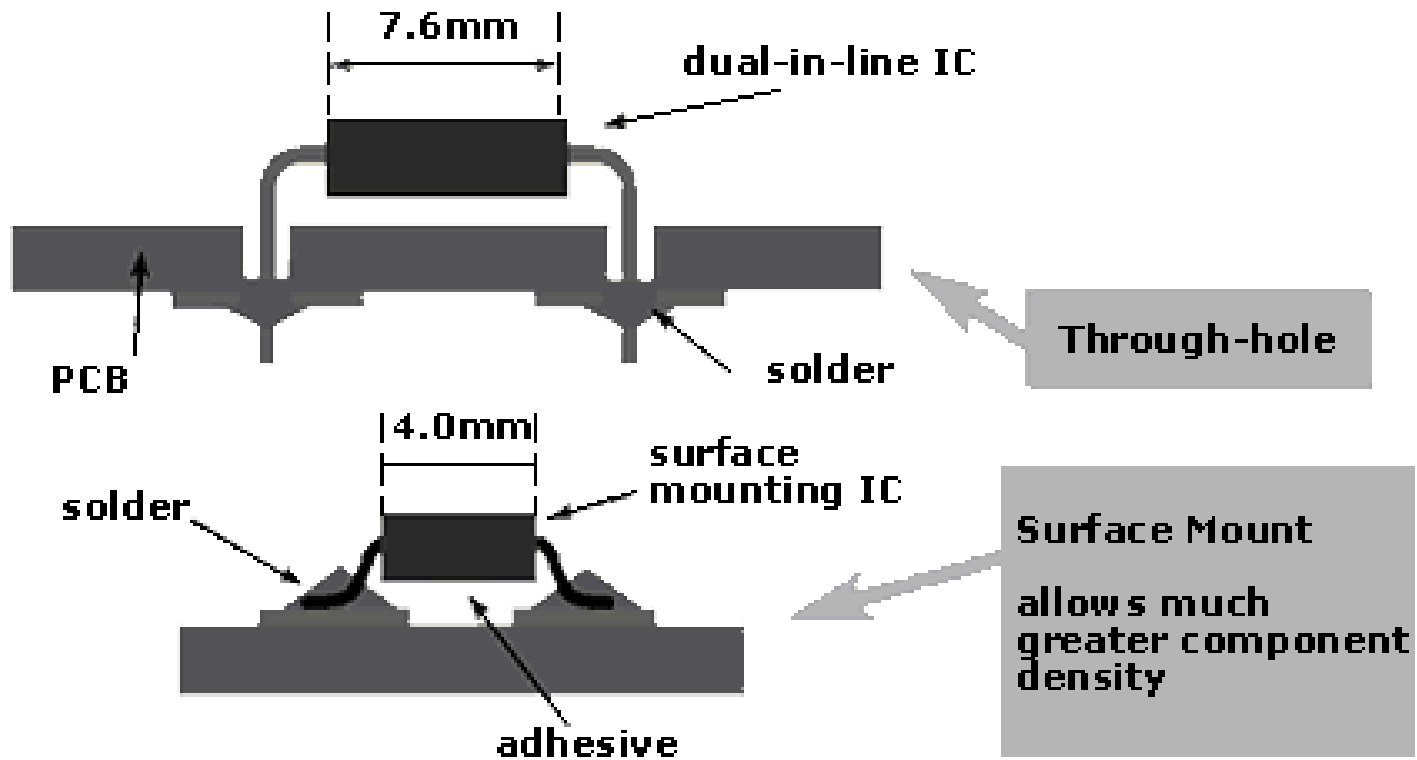
Furo metalizado



http://www.ami.ac.uk/courses/ami4809_pcd/unit_01/

- SMT = Surface Mount Technology







Logins nos PCs



- **Linux**

Conta: aluno

Password: ovosmoles

- **Windows**

Conta: verao.academia@visit.uaveiro.eu

Password: averao



Logins nos PCs



- **Linux**

Conta: aluno

Password: ovosmoles

- **Windows**

Conta: verao.academia@visit.uaveiro.eu

Password: averao

- **Página: <http://sweet.ua.pt/~pf/AcadVerao>**